

WARDS  
**SEA KING**

**OUTBOARD  
MOTOR**

**PARTS CATALOG**

MW-55

**9.6**  
**O.B.C. CERTIFIED BRAKE H.P. AT 4750 R.P.M.**

**MODEL**  
**VWB-27209**

Printed in U. S. A.

9/71

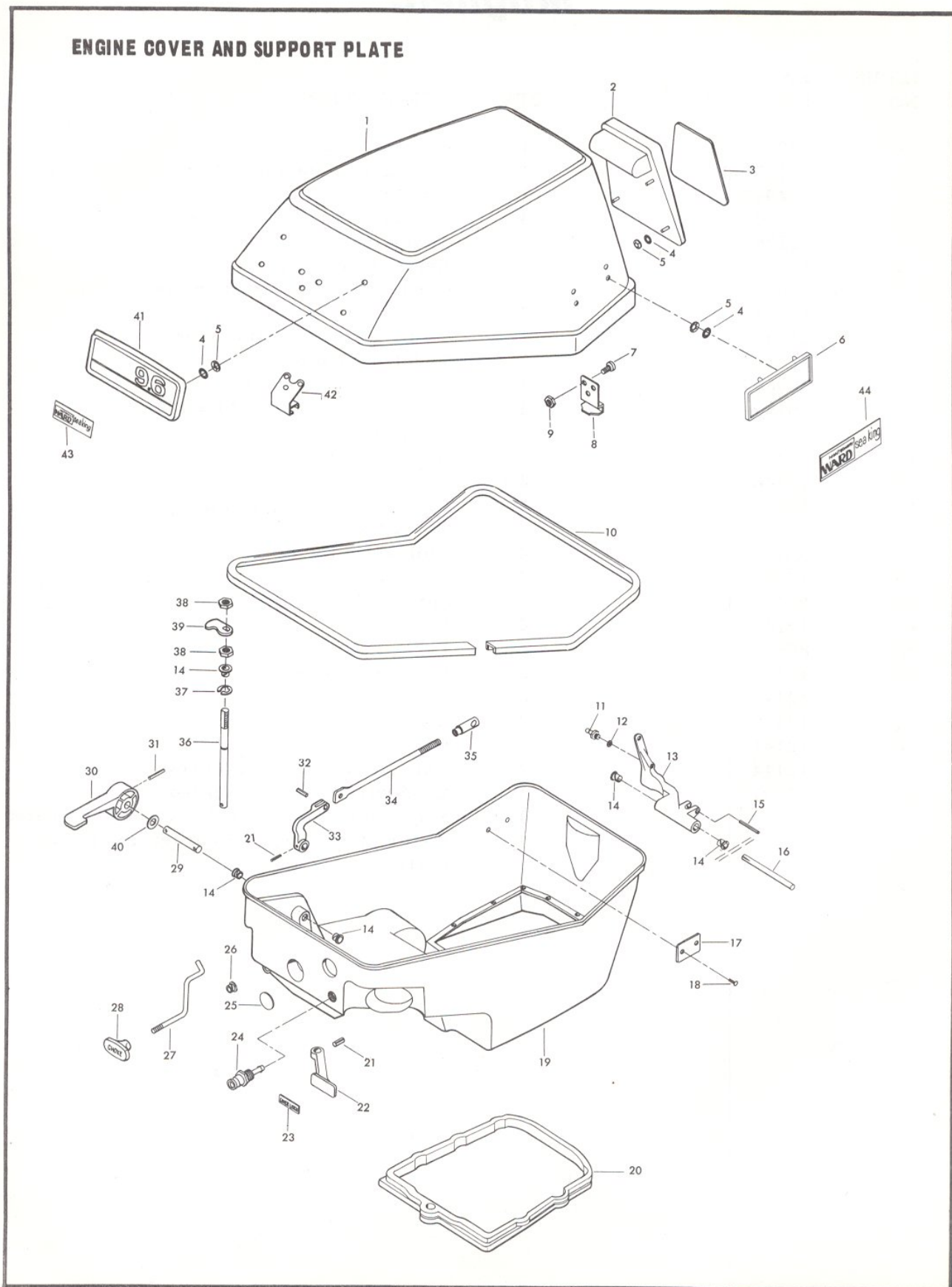
**SEA KING** — SOLD EXCLUSIVELY BY **MONTGOMERY WARD**

# Engine Cover and Support Plate

ILLUS. NO.	PART NO.	QTY.	DESCRIPTION
1	S447712	1	Cover, engine w/bracket and retainer
2	392269	1	Handle, tilt
3	447180	1	Trim, engine cover, rear
4	85735	17	Seal, medallion
5	1753	17	Fastener
6	446392	2	Plate, side
7	1475	6	Fill hd screw, 10 - 24 x 1/2
8	A392480	1	Retainer, engine cover w/screws and nuts
9	7011	6	Elastic stop nut, 10 - 24
10	392756	1	Packing, support plate
11	98273	1	Stud, gear shift rod connector
12	8058	1	Internal tooth lockwasher
13	286876	1	Lever, gear shift
14	307818	6	Bearing
15	8542	1	Spring pin
16	286871	1	Pin, gear shift lever
17	A197395-2	1	Plate, identification w/screws
18	1293	2	Drive screw
19	A392038	1	Plate, support
20	286989-1	1	Seal, support plate
21	8547	2	Spring pin
22	392469	1	Handle, cover latch
23	392585	1	Decal, cover latch
24	197767-1	1	Bushing, fuel line
25	A343226	1	Plug
26	197319	1	Bearing, choke rod
27	392503	1	Rod, choke
28	392547	1	Knob, choke
29	392417	1	Shaft, gear shift handle
30	392614	1	Handle, gear shift
31	8549	1	Spring pin
32	8552	1	Spring pin
33	392619	1	Lever, shift handle shaft
34	392611	1	Rod, gear shift
35	286685	1	Connector, gear shift rod
36	392763	1	Shaft, cover latch
37	73741-1	1	Retaining ring
38	1518	2	Jam nut, 5/16 - 18
39	392777	1	Cam, cover latch
40	8049	1	Bowed washer
41	447711	1	Plate, front
42	A392774	1	Bracket, cover latch w/screws and nuts
43	447512	1	Insert, plate front
44	A446892	2	Insert, side plate
	392400	1	Decal, gear shift (not shown)

Order by Part Number and Name, giving Motor, Model and Serial Number

### ENGINE COVER AND SUPPORT PLATE



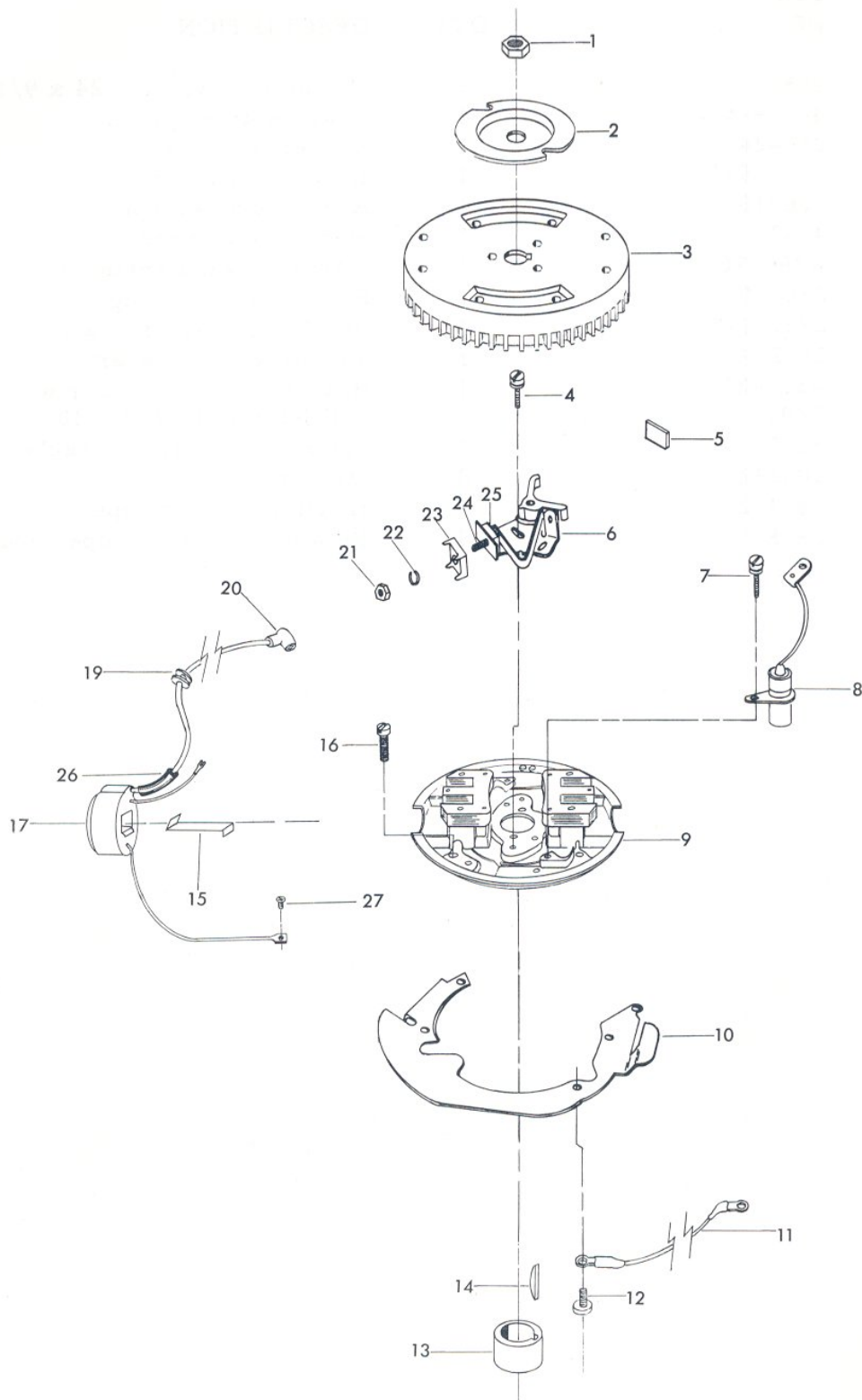


# Magneto

ILLUS. NO.	PART NO.	QTY.	DESCRIPTION
1	1809	1	Hex nut, 1/2 - 20
2	901456-1	1	Emergency starter collar
3	302097	1	Flywheel
4	12170	4	Contact screw w/lockwasher
5	12228	1	Cam wiper felt
6	12153	2	Breaker point set
7	12083	2	Condenser screw w/lockwasher
8	12181-1	2	Condenser
9	12343	1	Stator plate w/laminations
10	286192	1	Throttle cam plate
11	289664	1	Wire, stator ground
12	1075	4	Fill hd screw, 10 - 24 x 1/2
13	217002	1	Magneto breaker cam
14	54498	1	Magneto key
15	12146	2	Coil wedge spring
16	1090	4	Fill hd screw w/lockwasher, 10 - 24 x 9/16
17	A12231	2	Coil w/lead wire
19	12088	4	Grommet
20	K-750-1	2	Sparkie w/spring
21	12127	2	Stud
22	8055	2	Lockwasher
23	12128	2	Insulator, outside
24	12142	2	Connection stud
25	12129	2	Insulator, inside
26	12141	1	Sleeve
27	12114	2	Coil ground terminal screw
	12091	1	Lead wire marker, top (not shown)
		1	Magneto complete, order component parts
		1	Stator plate complete, order component parts

Order by Part Number and Name, giving Motor, Model and Serial Number

### MAGNETO

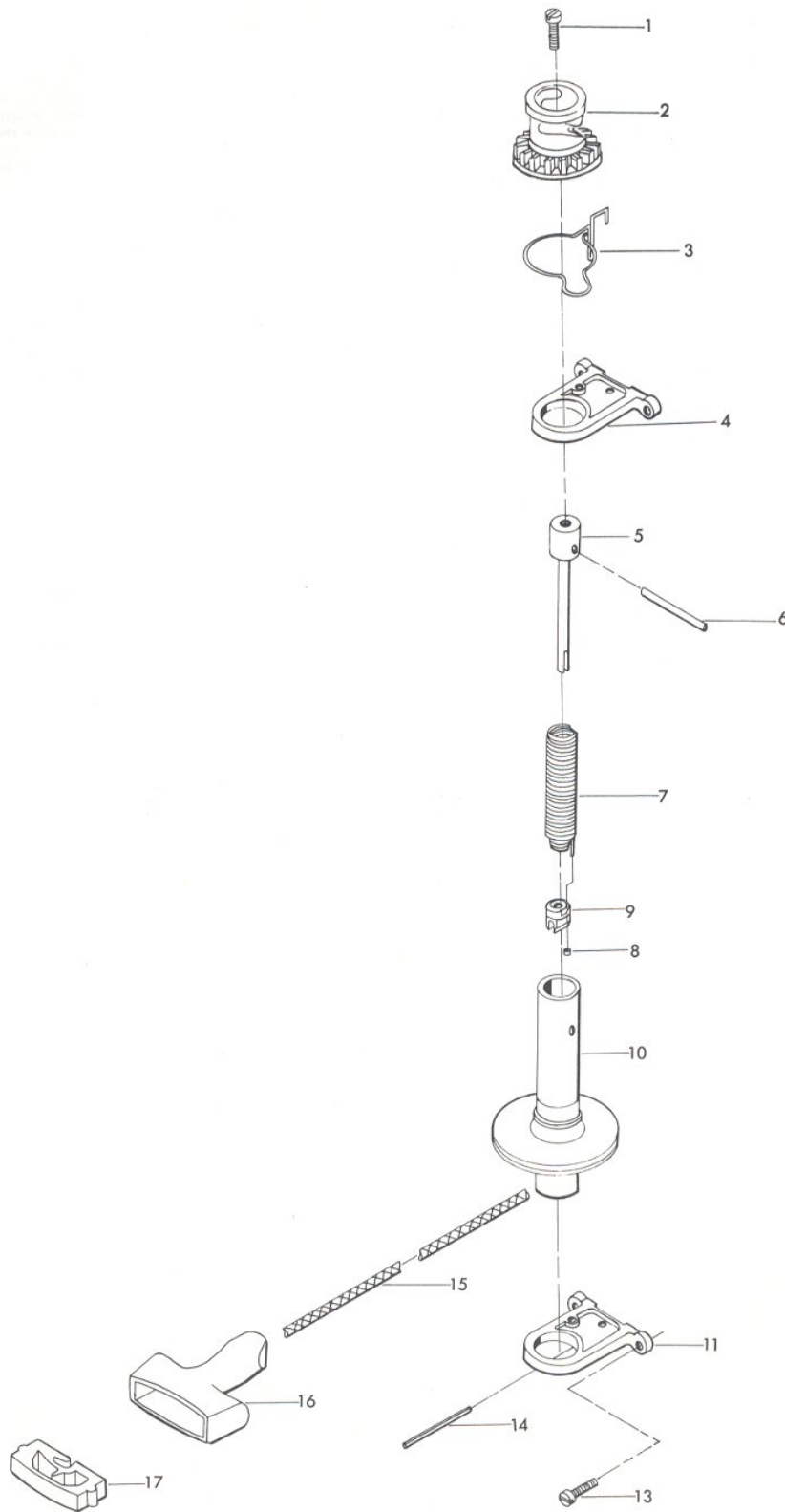


# Starter

ILLUS. NO.	PART NO.	QTY.	DESCRIPTION
1	1089	1	Fill hd screw, 10 - 24 x 9/16
2	40674-6	1	Gear, starter pinion
3	286424	1	Starter pinion spring
4	286675-1	1	Bracket, starter upper
5	286710	1	Arbor, starter spring
6	40425	1	Starter pinion pin
7	A286970	1	Starter rewind spring w/end and retainer
8	286930	1	End, starter spring
9	286737-1	1	Retainer, starter rewind spring
10	286239	1	Starter spool w/shaft
11	A317427	1	Bracket, starter lower w/spring pin
13	1201	4	Fill hd screw, 1/4 - 20 x 3/4
14	1875	1	Spring pin, starter bracket
15	409232	1	Starter rope
16	286132	1	Handle, starter rope
17	286817-1	1	Retainer, starter rope handle

Order by Part Number and Name, giving Motor, Model and Serial Number

**STARTER**



# Fuel System

ILLUS. NO.	PART NO.	QTY.	DESCRIPTION	ILLUS. NO.	PART NO.	QTY.	DESCRIPTION
1	1069	3	Fill hd screw, 10 - 24 x 1 1/16	35	* 010790	1	Inlet needle, seat and gasket
2	901746-1	1	Fuel pump cover	36	010165	1	Inlet seat gasket
3	24748	1	Gasket, fuel pump	37	* 012027	1	Main fuel jet (.047)
4	1286	2	Pan hd screw, 4 - 40 x 3/16	38	* 015525	1	Main nozzle
5	18160-1	2	Reed fuel pump	39	015718	1	Throttle shaft and lever
6	A24757-3	1	Fuel pump reed plate w/reeds and screws	40	* 015526	1	Throttle shaft return spring
7	2A24747-1	1	Fuel pump diaphragm w/gaskets	41	016098	1	Throttle shutter
8	901811	1	Fuel pump filter	42	* 08942	1	Throttle shutter retaining screw and lockwasher
9	2706772	4	Hose clamp	43	286435-3	1	Pulley starter rope
10	40253	1	Fuel line	45	1201	6	Fill hd screw, 1/4 - 20 x 3/4
11	A24754-1	1	Fuel line w/clamps	46	286316	1	Throttle cam follower
12	1834	1	Fill hd screw, 10 - 24 x 7/8	47	1490	2	Hex nut, 1/4 - 20
13	A286190-1	1	Arm, carburetor adjusting	48	78318	1	Roller, throttle cam follower
14	66193	1	Throttle link	49	78410	2	Retainer
15	1365	2	Square nut, 10 - 24	50	18906	1	Carburetor gasket
16	* 02531	1	Body channel welch plug	51	19209-2	2	Stud, carburetor
17	* 010588	1	Body channel cup plug	52	2A424167	1	Manifold w/studs
18	016027	1	Bypass tube	53	1876	1	Spring pin
19	04784	1	Choke friction ball	54	1558	1	Hex slot hd screw, 10 - 24 x 3/8
20	08805	1	Choke friction spring	55	424168	1	Gasket, manifold
21	015736	1	Choke shaft and lever	56	1298	8	Rd hd screw, 6 - 32 x 1/4
22	341384	1	Retainer, choke rod	57	424161	4	Reed stop
23	015368	1	Choke relief valve	58	31160-1	4	Reed
24	016161	1	Choke relief valve spring	59	A424158	1	Reed plate w/reeds, stops and screws
25	015367	1	Choke shutter	60	286159	1	Gasket reed plate
26	010280	1	Choke shutter retainer screw and lockwasher	61	8003	2	Plain washer
27	013554	1	Float		431061	1	Carburetor complete CO-7A
28	* 013944	1	Float lever pin		* 10006	1	Gasket set, carburetor (not shown)
29	015366	1	Fuel bowl		10007	1	Repair parts kit, carburetor (not shown)
30	015623	1	Fuel bowl gasket				
31	013945	1	Fuel bowl retaining screw				
32	02510	2	Fuel bowl retaining screw gasket				
33	* 015520	1	Idle mixture screw				
34	* 011103	1	Idle mixture screw spring				

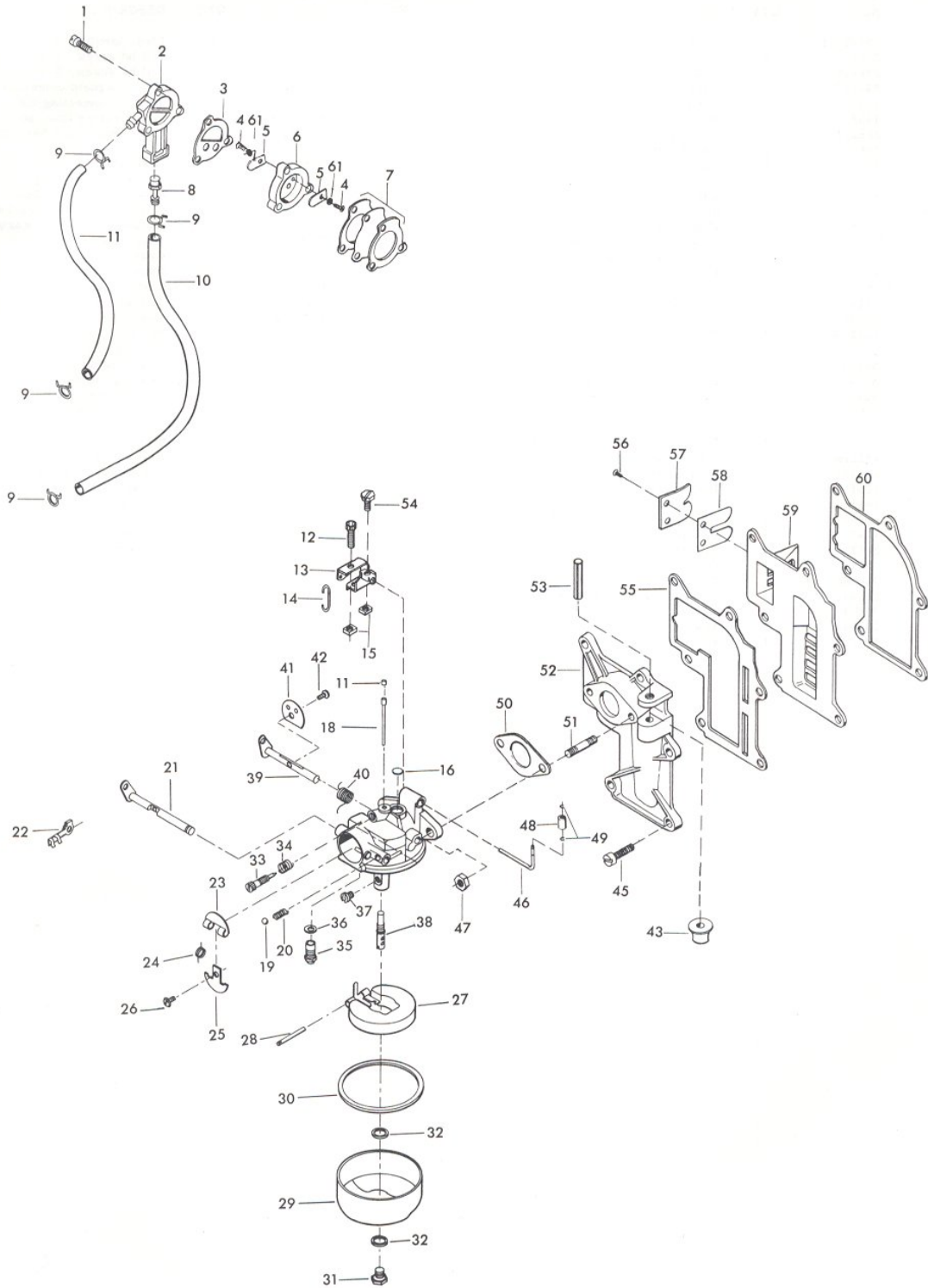
## OPTIONAL SIZE MAIN FUEL JETS (Use Only At Altitudes Indicated)

	Sea Level-3000 Ft.	3000-6000 Ft.	6000 and Up
Size	.047	.045	.043
Part No.	012027	012101	012284



Order by Part Number and Name, giving Motor, Model and Serial Number

### FUEL PUMP, REED PLATE AND CARBURETOR

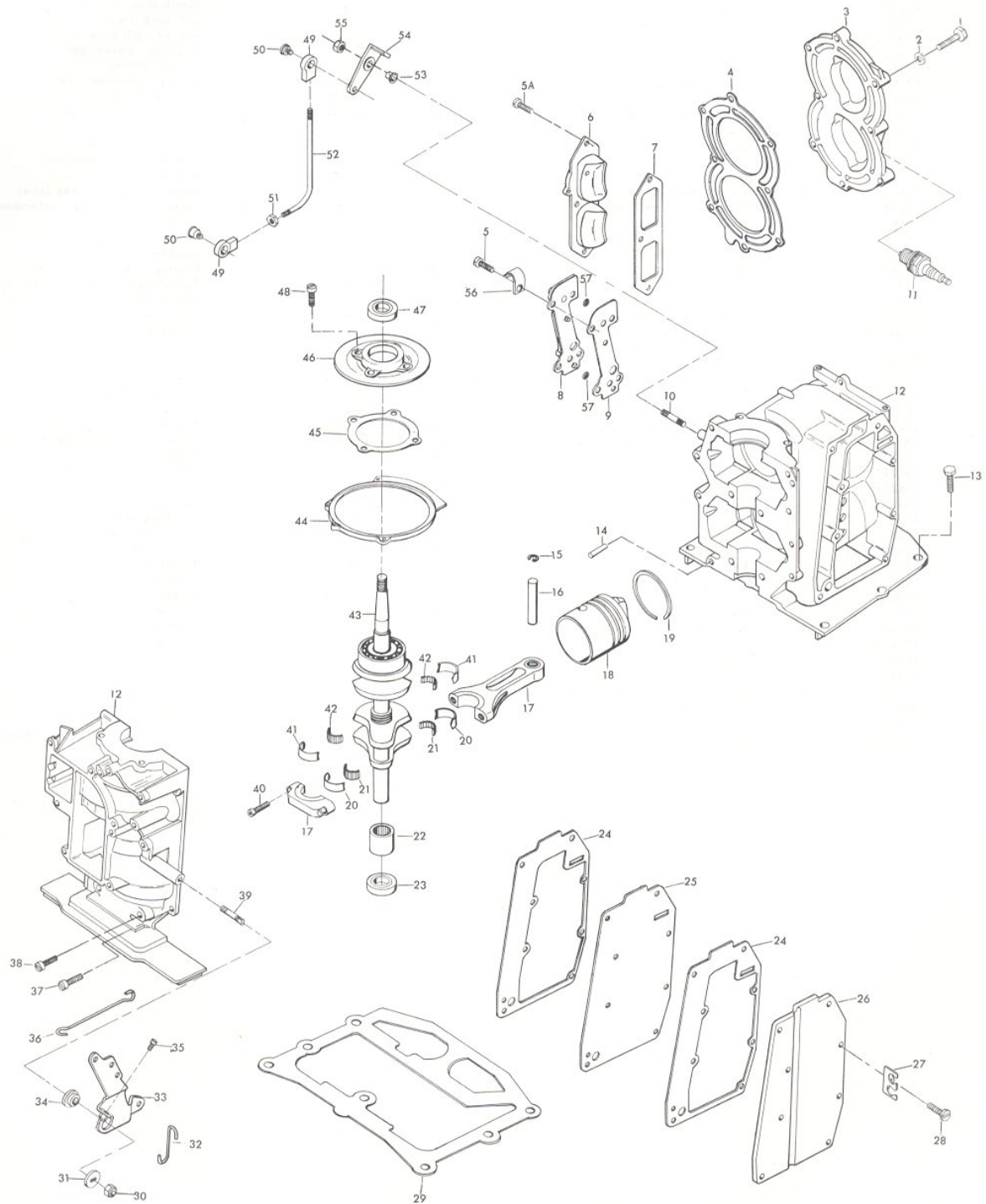


# Power Head

ILLUS. NO.	PART NO.	QTY.	DESCRIPTION	ILLUS. NO.	PART NO.	QTY.	DESCRIPTION
1	901938-1	8	Screw, cylinder head	36	286509	1	Link, throttle cam
2	8025	8	Plain washer	37	* 1107	8	Fill hd screw, 1/4 - 20 x 3/4
3	286518	1	Head, cylinder	38	* 1798	4	Fill hd screw, 5/16 - 18 x 1 1/4
4	286529-2	1	Gasket, cylinder head	39	* 286440	1	Stud, magneto control lever
5	1239	4	Hex hd screw, 1/4 - 20 x 5/8	40	* 286634	4	Screw, connecting rod
5A	1502	3	Hex cap screw, 1/4 - 20 x 5/8	41	* A286655	1	Main bearing liner set (2 per set)
6	286222	1	Cover transfer port	42	* 286571	1	Roller set, main bearing (26 per set)
7	286223	1	Gasket, transfer port cover	43	* A286018-1	1	Crankshaft w/upper main bearing. Upper main bearing not sold separately. Contact factory for authorization to return crankshaft for installation of new bearing.
8	A429471	1	Cover, cylinder drain w/check valves and screens				
9	429472	1	Gasket, cylinder drain cover	44	73082	1	Ring, magneto stator
10	* 28004	1	Stud, interlock lever	45	286277	1	Gasket, crankshaft bearing cage
11	S174227	2	Plug, spark - L-4-J	46	A286144	1	Cage, crankshaft bearing w/seal
12	* A442010	1	Cylinder w/crankcase cover, dowel pins, screws and studs	47	346146	1	Seal, crankshaft upper
13	* 1823	6	Hex cap screw, 5/16 - 18 x 1	48	1111	4	Fill hd screw, 1/4 - 20 x 7/8
14	* 8559	2	Dowel pin	49	84035-2	2	Bearing, interlock lever
15	* 31410	4	Retaining ring, piston pin	50	84026	2	Swivel, interlock rod bearing
16	* 174017	2	Pin, piston	51	1339	1	Hex nut, 10 - 24
17	2A286016	2	Rod, connecting w/cap and screws	52	286531	1	Rod, interlock
18	* A286015-1	2	Piston	53	197813	1	Bearing, interlock lever
19	A174260	2	Piston ring set (2 per set)	54	286977-1	1	Lever, interlock
20	* A286229	2	Connecting rod liner set (2 per set)	55	7008	1	Stop nut, 1/4 - 20
21	* 286228	2	Roller set, connecting rod (26 per set)	56	286772-1	1	Hose clamp
22	* 343014	1	Bearing, crankshaft lower main	57	429811	2	Screen
23	141118	1	Seal, crankshaft lower		G-1005	1	Gasket set (not shown)
24	286154	2	Gasket, exhaust cover		K-737	1	Engine touch-up paint spray bomb
25	286151	1	Plate, exhaust				Frost White Flat
26	286152	1	Cover, exhaust		K-746	1	Engine touch-up paint spray bomb
27	901834	1	Clip, lead wire				Olive Gold Enamel
28	1240	8	Hex slot hd screw, 1/4 - 20 x 7/8		C431010	1	Cylinder complete. Includes all items marked with an asterisk (*).
29	286279	1	Gasket, cylinder mounting				
30	1803	1	Stop nut, 5/16 - 24				
31	286282	1	Washer				
32	286445	1	Link, magneto control rod				
33	A286081-1	1	Lever, magneto control				
34	183813	1	Bearing, magneto control lever				
35	1052	1	Fill hd screw, 1/4 - 20 x 1				

Order by Part Number and Name, giving Motor, Model and Serial Number

### POWER HEAD



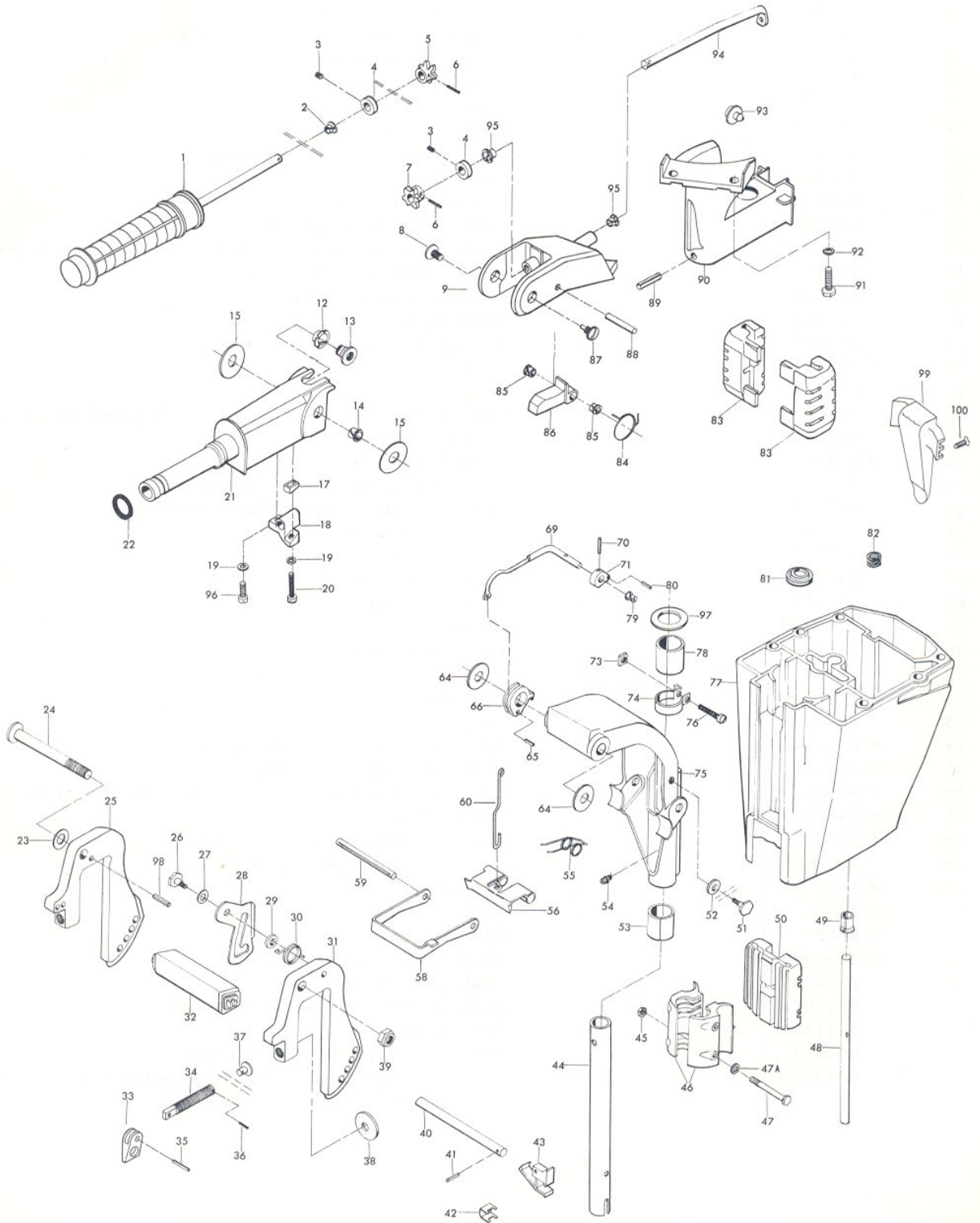
# Motor Leg

ILLUS. NO.	PART NO.	QTY.	DESCRIPTION	ILLUS. NO.	PART NO.	QTY.	DESCRIPTION
1	A447137	1	Grip, steering handle w/shaft	49	286914	1	Sleeve water line
2	85610	1	Bearing	50	286346	1	Shock mount lower
3	1859	2	Hex socket headless set screw	51	286422-1	1	Tilt lock pivot
4	A343178	2	Retainer	52	286451	1	Spacer, tilt lock
5	429815	1	Gear, steering handle shaft	53	286169	1	Bearing, swivel bracket
6	1978	2	Spring pin	54	213274	1	Grease fitting
7	429815	1	Gear, magneto control shaft	55	286300	1	Spring, reverse lock
8	1799	1	Truss hd screw, 5/16 - 18 x 5/8	56	286349	1	Reverse lock
9	392078	1	Steering handle bracket	58	286433	1	Bracket shallow water drive
12	286818	1	Bearing	59	1806	1	Groove pin
13	286224	1	Insert, steering handle pivot	60	A341510	1	Link, reverse lock
14	197813	1	Bearing	64	286286-1	2	Washer, stern bracket
15	286220	2	Washer, steering handle	65	1794	1	Spring pin
17	341693	1	Wedge, steering handle	66	286827	1	Reverse lock release lever
18	341816	1	Bearing, steering handle	69	A387742	1	Lever, reverse lock intermediate
19	8058	2	Int. tooth lockwasher	70	8538	1	Spring pin
20	1829	1	Fill hd screw, 10 - 24 x 7/8	71	286364	1	Lever, reverse lock
21	392079	1	Steering handle	73	1608	1	Square nut, 1/4 - 20
22	53795-1	1	Seal, steering handle grip dampener (large)	74	286573-1	1	Clamp, steering friction
23	8039	1	Plain washer	75	A286072-1	1	Swivel bracket w/grease fitting
24	286037	1	Stern bracket pivot bolt	76	1820	1	Fill hd screw, 1/4 - 20 x 1 3/8
25	2A424032	1	Stern bracket stbd. w/clamp screw, foot and handle	77	2A431133	1	Motor leg w/water line
26	286422-1	1	Tilt lock pivot	78	286169	1	Bearing, swivel bracket
27	1666	1	Bowed spring washer	79	197813	2	Bearing
28	286541-1	1	Tilt lock	80	1794	1	Spring pin
29	286451	1	Spacer, tilt lock	81	901307-2	1	Seal, driveshaft
30	286544-1	1	Spring, tilt stop	82	286414	1	Spring, leg water bracket
31	2A424532	1	Stern bracket port w/clamp screw, foot and handle	83	286347	2	Shock mount upper
32	392647	1	Carrying handle	84	286868	1	Spring, steering handle stop
33	298075	2	Handle, clamp screw	85	197813	2	Bearing, steering handle stop
34	298073-1	2	Clamp screw w/foot	86	286490	1	Steering handle stop
35	8554	2	Spring pin	87	286080	1	Screw, steering handle pivot
36	8536	2	Spring pin	88	1807	1	Groove pin
37	66480	2	Stud clamp screw	89	1805	1	Spring pin
38	24074	2	Clamp screw foot	90	A286582	1	Steering arm w/spring pin
39	7005	1	Stop nut, 3/8 - 16	91	1502	2	Hex cap screw, 1/4 - 20 x 5/8
40	A286113	1	Lock bar w/handle and spring	92	8060	2	Ext. tooth lockwasher
41	8540	1	Spring pin	93	286539	1	Bumper
42	286461	1	Spring, lock bar handle	94	447838	1	Magneto control shaft
43	286114	1	Lock bar handle	95	307818	2	Bearing
44	286019	1	Kingpin	96	1475	1	Fill hd screw, 10 - 24 x 1/2
45	1341	2	Hex nut, 1/4 - 20	97	286011	1	Washer, swivel bracket
46	286956	2	Bracket, shock mount lower	98	8538	1	Spring pin
47	A1844	2	Hex bolt, 1/4 - 20 x 2 3/8	99	431832	1	Cover, idle relief
47A	8083	2	Spring lockwasher	100	1957	1	Flat socket hd screw, 1/4 - 20 x 1/2
48	286244	1	Water line		392894	1	Steering handle indicator (not shown)
					392387	1	Decal, tilt release (not shown)



Order by Part Number and Name, giving Motor, Model and Serial Number

### MOTOR LEG

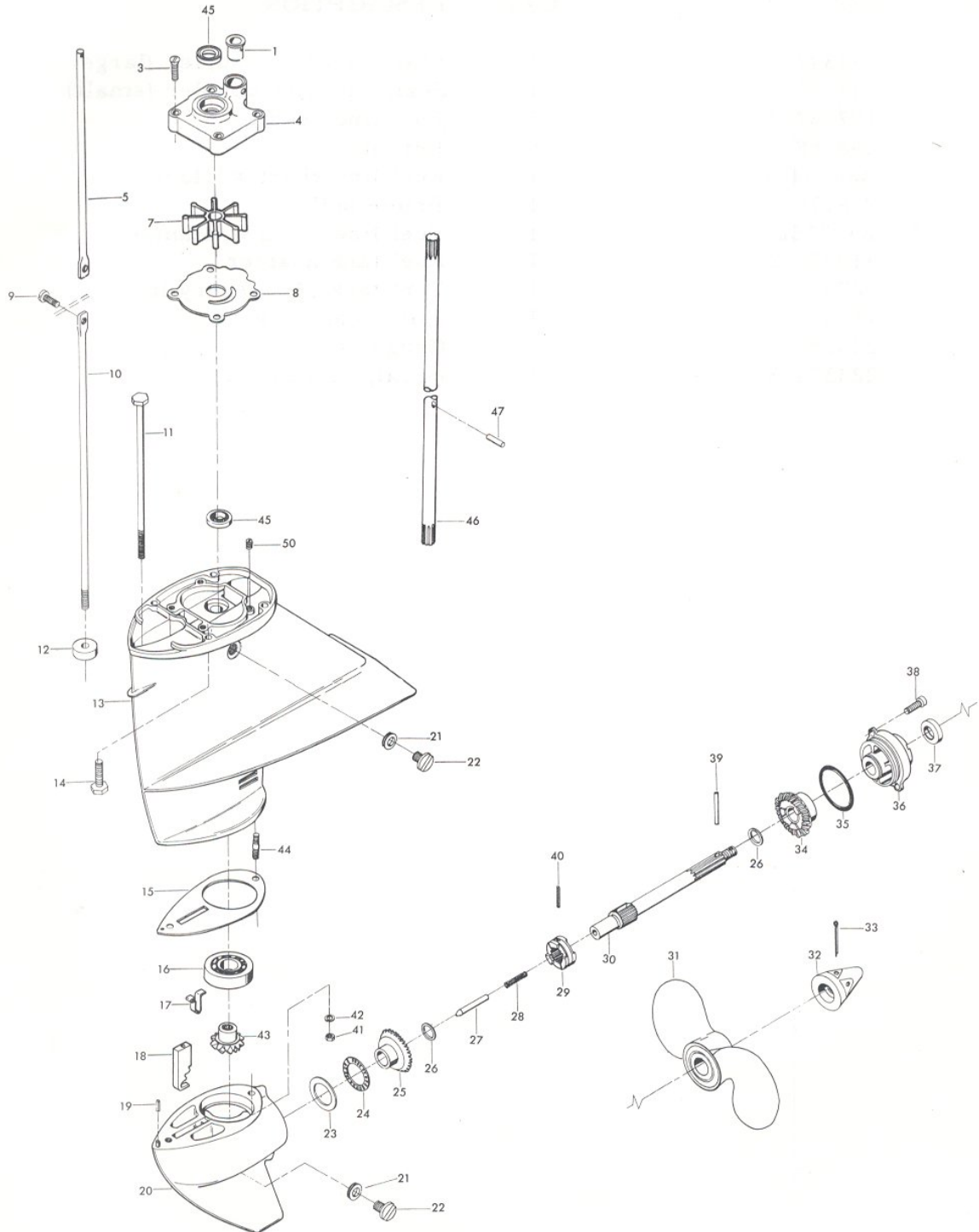


# Gear Housing

ILLUS. NO.	PART NO.	QTY.	DESCRIPTION
1	55914	1	Seal, inlet water line
3	1150	4	Flat hd screw, 1/4 - 20 x 1 1/8
4	A343060	1	Water pump body w/seal
5	286615	1	Gear shift rod upper
7	901065-1	1	Water pump impeller
8	341562	1	Water pump back plate
9	1976	1	Socket hd screw w/lockwasher, 10 - 24 x 1/2
10	286705	1	Gear shift rod lower
11	1800	1	Hex bolt, 1/4 - 20 x 7
12	286618-1	1	Seal, gear shift rod lower
13	A286554-2	1	Gear housing upper w/bearing, seal, plug and washer
14	1199	4	Hex hd screw, 1/4 - 20 x 1
15	286555	1	Gasket, gear housing
16	* 127910-2	1	Bearing bevel pinion thrust
17	* 286895	1	Spring cam detent
18	* 286721	1	Clutch shift cam
19	* 8553	1	Spring pin
20	* A286054	1	Gear housing lower w/bearing, plug and spring pin
21	* 8077	2	Nyltite washer
22	* 50109	2	Gear housing plug
23	* 286903	1	Race, propeller shaft bearing
24	* 286901	1	Bearing, radial, propeller shaft
25	* A286023	1	Bevel gear front w/bearing
26	* 901717	2	Thrust washer
27	* 286728	1	Clutch shift pin
28	* 901719-2	1	Clutch spring
29	* A431521	1	Clutch
30	* 286098-1	1	Propeller shaft
31	26462	1	Propeller (Accessory Item)
32	A286094	1	Propeller nut w/cotter pin
33	1846	1	Cotter pin
34	* A286662	1	Bevel gear rear w/bearing
35	* 286305	1	Seal, prop shaft bearing cage
36	* A343298	1	Propeller shaft bearing cage w/bearing and seal
37	* 346118	1	Seal, propeller shaft
38	* 1802	2	Fill hd screw, 1/4 - 20 x 9/16
39	A324101	1	Propeller pin, pack of 3
40	* 1970	1	Spring pin
41	* 1490	1	Hex nut, 1/4 - 20
42	* 8063	1	Spring lockwasher
43	* A286266	1	Gear, bevel pinion w/bearing
44	286008	1	Stud, gear housing rear
45	901307-2	2	Seal, water pump and driveshaft
46	343128	1	Driveshaft
47	901563	1	Water pump impeller drive pin
	C286054	1	Gear housing lower complete, includes all items marked with an asterisk (*).

Order by Part Number and Name, giving Motor, Model and Serial Number

### GEAR HOUSING



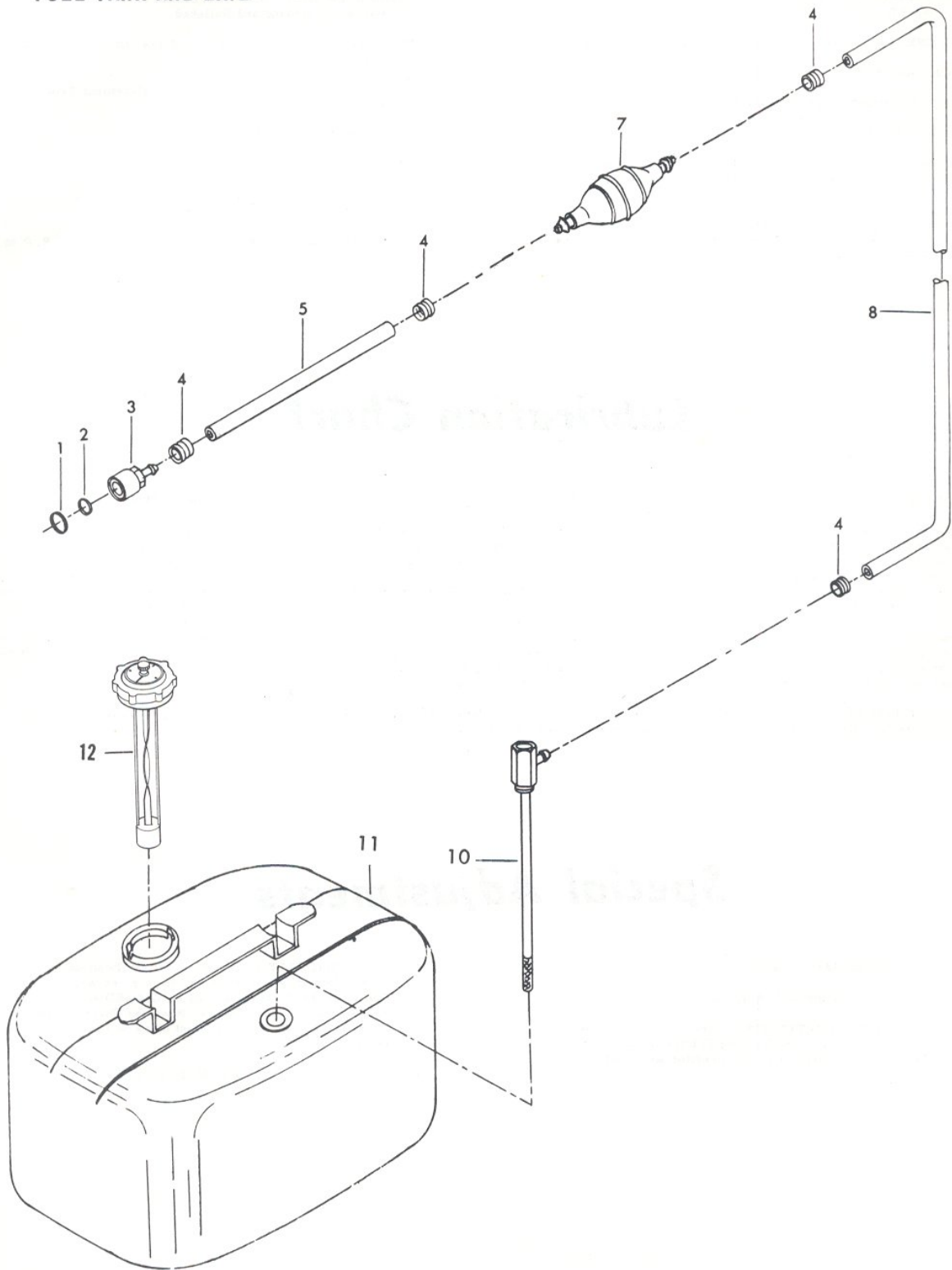
# Fuel Tank

ILLUS. NO.	PART NO.	QTY.	DESCRIPTION
1	213342	1	Seal, fuel line coupler (large)
2	213735	1	Seal, fuel line coupler (small)
3	197787-2	1	Fuel line coupler
4	298788	4	Ferrule
5	A84754-1	1	Fuel line short w/clamps
7	S387766-1	1	Prime bulb
8	A197752-1	1	Fuel line, long w/clamps
10	310755-2	1	Fuel tank adapter
11	9273	1	Fuel tank (Accessory Item)
12	76252	1	Filler cap gasket
13	213251	1	Gauge cap
	224394-3	1	Decal, fuel mixture



Order by Part Number and Name, giving Motor, Model and Serial Number

### FUEL TANK AND LINE



# Specifications

HORSEPOWER -- 9.6 O. B. C. Certified Brake H. P. at 4750 R. P. M.

ENGINE -- Two-Cycle, Twin Cylinder, Alternate Firing.

BORE AND STROKE -- 2 - 3/16" x 1 3/4".

DISPLACEMENT -- 13.15 Cubic Inches.

CARBURETOR -- Float Feed.

CONNECTING ROD -- Die Cast Aluminum - Cased Needle Bearings at Piston Pin. Uncased Needle Bearing With Steel Liners at Crankshaft.

CRANKSHAFT -- Forged Nickel Steel - Ball Bearing At Upper Main. Uncased Needle Bearing With Steel Liners at Center Main.

PROPELLER SHAFT AND DRIVESHAFT -- Stainless Steel, Hardened, Ground and Polished.

PROPELLER -- Aluminum Alloy - 8 1/4" Dia. x 8 1/4" Pitch, Right Hand Rotation.

COOLING -- Water Cooled Positive Displacement Type Water Pump.

TRANSOM HEIGHT -- 15" or 20".

WEIGHT -- 58 Lbs.

TILT LOCK -- Positive Tilt Lock, Permits Engine to Remain in Tilted Position When Not in Use.

RECOMMENDED OPERATING RANGE -- 4300 - 5200 R. P. M.

# Lubrication Chart

## PART NAME

## TYPE OF LUBRICANT

## HOW OFTEN

Starter pinion gear	Riverside Two-Cycle Engine Oil	If starter operation becomes sluggish
Starter spool bearings	Riverside Two-Cycle Engine Oil	If starter operation becomes sluggish
Throttle cam follower	Riverside Two-Cycle Engine Oil	Twice each season, oftener if required
Magneto control shaft bearing	Riverside Two-Cycle Engine Oil	Twice each season, oftener if required
Steering handle pinion gear	EP-All Purpose Chassis Lubricant	Twice each season, oftener if required
Steering handle bevel gear	EP-All Purpose Chassis Lubricant	Twice each season, oftener if required
Reverse lock	Riverside Two-Cycle Engine Oil	Twice each season, oftener if required
Clamp screws	Riverside Two-Cycle Engine Oil	Twice each season, oftener if required
Stern bracket pivot bolt	Riverside Two-Cycle Engine Oil	Twice each season, oftener if required
Gear housing	Wards Sea King Hypoid Outboard Gear Oil	Every 30 hours, oftener if required
Fuel line coupler release ring	Riverside Two-Cycle Engine Oil	Twice each season, oftener if required

GREASE FITTINGS -- Grease Fittings Are Provided At Critical Points Where Bearing Surfaces Are Not Exposed Using An Automotive Type Grease Gun and Lubricant, Grease Twice Each Season or Oftener if Required.

# Special Adjustments

BREAKER POINT GAP -- .020".

SPARK PLUG -- Champion L-4-J, Gap .030".

ADJUSTING STEERING TENSION -- Steering Tension Can Be Adjusted by Turning the Steering Friction Adjusting Screw, Illustration 76, Page 13 in the Direction Required.

POINT OF THROTTLE OPENING -- Set the Position of the Throttle Cam Follower, Illustration 48, Page 9, so that the Throttle Shutter in the Carburetor Will Be CLOSED and all Slack REMOVED from the Linkage, When the Throttle Cam Follower is on the Throttle Pick-Up Point Mark on the Throttle Cam Plate.

FLYWHEEL NUT -- Torque to 40-50 Foot Pounds.